

ACCESS STATEMENT 2024

This access statement does not contain personal opinions as to our suitability for those with access needs but aims to accurately describe the facilities and services that we offer to all our guests/visitors.

Access Statement for Leonardo Edinburgh City Hotel

Introduction

We are a city centre located hotel at Lauriston Place and are approximately a 10-minute walk to the city centre. We are about a 17-minute walk from Haymarket railway station with excellent public transport links such as trains and buses. There is a gradual - medium hill to walk from the station, (about 10%) but the immediate landscape is all level. We have 52 bedrooms over 3 floors. Our Reception is located on the basement floor. Every floor is accessible by lift. The fully accessible room types are (Standard double x1, Superior x1 and Twin x1) suitable for people with all kinds of access needs.

We look forward to welcoming you. If you have any queries or require any assistance, please phone 0131 622 7979 or email let_operations@leonardohotels.co.uk



ACCESS STATEMENT 2024

Pre-Arrival

The nearest railway station is Haymarket Station and is located approximately a 17 min walk away, access is possible by wheelchair and there are dropped kerbs.

Our preferred taxi company is City Cabs and on request, they will send a taxi that is wheelchair accessible. They can be booked via our front office team or alternatively can be contacted via 0131 228 1211.



All Lothian buses are equipped with accessible access for all travellers. The only restrictions are using a very large electric wheelchair or large mobility scooter. It is advised to contact their advice line for further guidelines: <https://www.lothianbuses.com>

There are bus stops just Hotel and our reception to advise on the correct destination.



a 2-minute walk from the staff is available 24 hours buses to get you to your

Car Parking

All cars can use the courtyard for offloading and loading luggage.

We only offer parking on site for blue badge holders, subject to availability.

and Arrival

ACCESS STATEMENT 2024

Q-Park Quarter mile parking is a 4-minute Drive from our hotel (postcode is EH3 9AU). It's also well lit, protected by CCTV and is open 24 hours a day, Monday to Sunday, including Bank Holidays.

The surface from the car park to the hotel is even tarmac / paving slaps.

The car park is well lit and en route to the hotel there is street lighting. There is a drop off point at the back of the hotel.

When entering the building there are automatic sliding doors. There are no steps to the main entrance.

Upon arrival, we can give directions to the car parks available.

If a guest is not able to take their own luggage to the bedroom - we will take it for them.

The opening width of our automatic doors is 1.5m

Main



Entrance / Reception / Welcome Area

The reception is located immediately inside the front doors on the basement level with no steps. There is a lift available to all floors from the reception. The basement floor is level throughout. Pushchairs and wheelchairs can be manoeuvred easily around reception, lobby and bar area, and there are chairs and sofas available in reception.

ACCESS STATEMENT 2024

In the lobby and basement, the flooring is Tile/carpet, in the bar the flooring is vinyl, and the restaurant is carpeted.

All areas in reception and the lobby are well lit with LED lights in the ceilings and on the walls.

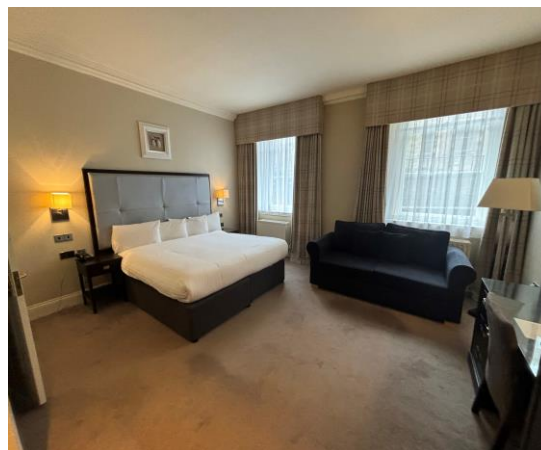
We frequently accommodate show rounds of the property - we advise to pre-book with our General Manager.



Bedrooms

ACCESS STATEMENT 2024

On the lower floor is where our fully accessible bedrooms are located (1 standard double, 1 superior and 1 twin). There is a lower peephole for secure access and mini safe in each room as well as an iron and ironing board. Windows open but are restricted for safety.



Bedroom doors are marked with the door number on the front - these are not raised in Braille format.

The furniture is fitted (desk, cupboards, wardrobe) but the chair and table can be removed if requested.

The beds in our accessible rooms are kings/twins.

The space next to the bed for wheelchair users to transfer onto the bed is 49" (125cm).

The height of the beds to the top of the mattress is 44 "(72cm). The bed base goes all the way to the floor.

The bedroom is lit with LED ceiling lights and 2 bedside lights. Additional lighting can be requested but is not guaranteed.

The walls are cornflower white, and doors are white, one wall in the bedroom is wallpapered and the carpets are beige. The bedrooms are all carpeted.

All our accessible bedrooms have telephones. We also have 2 vibrating pillows (available on request on a first come basis) we do not have hoists available.

Instructions on how to activate subtitles on the TV can be obtained from reception.

Bathrooms, Shower-rooms and Toilets

ACCESS STATEMENT 2024

A fully accessible room has a lowered bath with a shower over the top and there is a wet room with a separate shower, with a seat attached to the wall.

All bathrooms are equipped with grab rails and there is flat access from the bedrooms to the en-suite.

The clear width of the door is 32"

The height from floor (43.18cm)



door opening bathroom (81.28cm).

of the WC to seat is 17" and the

transfer side when looking at the WC is to the left.

The height of the washbasin 35" (88.9cm) and there is clear space under the basin.

Support/grab rails are located next to the toilet and shower seat.

The shower dials are on a turn mechanism only.

The bathrooms are well lit with ceiling lights and LED lights above the mirrors. The towels provided in the rooms are white.

There is red emergency pull cords located in the bathroom.

Public Areas - Halls, Stairs, Landings, Corridors

ACCESS STATEMENT 2024

The corridors are well lit with LED spotlight on the ceiling; the corridor width is 52" wide.

The flooring on all corridors is carpeted.

We have a lift from reception to all floors.

Top floor lift buttons are 49" max height and the lift call button is 39".

We may not be aware of your requirements so please request that a Personal Emergency Evacuation Plan (PEEP's) is carried out by the Duty Manager on arrival. If you have specific requirements with regards to evacuating during an emergency evacuation, please make this known to reception when we complete the PEEPs form on arrival. Should the fire alarm sound during your stay you will need to evacuate the building by using the nearest emergency exit stairwell nearest to your bedroom. The meeting point is Broad Plain (through the arch). We don't have any evacuation chairs in case of an emergency.



Public Areas - Lounges, Lobbies

Our lobby/lounge area is located immediately inside the front door with level entry. These are accessed through the main doors that have a clear opening width of 1.6m.

ACCESS STATEMENT 2024

These areas are level throughout with access space between furniture, with a combination of high and low tables, couch and bucket chairs.

These areas are all well-lit with LED ceiling lights and wall lights.

The flooring is a tiled and carpet is placed at the front door.

There is a TV at the bar area.

Drinks can be consumed in these areas if requested.

The nearest WC's and accessible WC is located behind the bar area with all level flooring throughout.



Restaurant/Dining Room, Bar & Bar area

The bar and restaurant are located on the basement floor and are accessible through a lift from reception.

The clear width to each area is 4.92 feet and more from the bar to the restaurant.

ACCESS STATEMENT 2024

There is space for wheelchairs and pushchairs and furniture can be moved if necessary.

The lights in the bar and restaurant are dimmed in the evenings but remain on during the day, the flooring is Vinyl in the bar and carpeted in the restaurant.

We try to accommodate any dietary requests and ask that we be informed in advance. Our menu's contain calorific information and indicate if Gluten Free. Non-dairy milk is available as standard.

Breakfast is a self-service continental buffet and hot breakfast is made to your order.

Staff can provide assistance to read out the menu if required.

All of our crockery is white, cutlery silver and the tables do not have cloths on them.



ACCESS STATEMENT 2024

Public Toilets

The nearest WC's and accessible WC are located on the same level through reception doors with the restaurant on the right and bar on your left.

The height of the WC from floor to seat is 17" (43.18cm).

There is a grab rail (when facing the WC) to the left of the toilet.



ACCESS STATEMENT 2024

Additional Information

LED lighting is used throughout the entire building.

The signage used in the hotel is of a medium font on a blue background - pictograms are not used.

The local hospital is

Edinburgh Royal Infirmary

51 Little France crescent,
Old Dalkeith Rd, Edinburgh EH16 4SA

General phone numbers

Main switchboard (for patient enquiries)	0131 536 100
Emergency Department	0131 537 600

There is complimentary WIFI throughout the hotel.

Address: **Leonardo Hotel Edinburgh City**
79 Lauriston Place,
Edinburgh,
EH3 9HZ

Telephone: 0131 622 7979

Email: let_operations@leonardohotels.co.uk

Website: <https://www.leonardohotels.co.uk/hotels/edinburgh/leonardo-edinburgh-city>