

ACCESS STATEMENT 2025

This access statement does not contain personal opinions as to our suitability for those with access needs, but aims to accurately describe the facilities and services that we offer all our guests/visitors

Access Statement for Leonardo Hotel Bradford

Introduction

We are a city centre hotel located on Thornton Road; we are approximately a 5-minute walk to the city centre. We are about a 10-minute walk from the Bradford interchange railway station with excellent public transport links to trains and buses. We have 198 bedrooms over 7 floors. Our meeting rooms are located on the 1st floor. Our gym is also located on the 1st floor and accessible for all our guests. The ground floor has no bedrooms on it, but every floor is accessible by lift. On every floor, there are fully accessible rooms in each room type (standard & Superior) suitable for people with all kinds of access needs.

We look forward to welcoming you. If you have any queries or require any assistance please phone (01274) 848500 or email bdi_operations@leonardohotels.com



Pre-

Arrival

The nearest railway station is Bradford Interchange Station and is located approximately a 10 min walk away, access is possible by wheel chair and there are dropped kerbs.

ACCESS STATEMENT 2025

Our preferred taxi company is Zip and on request, they will send a taxi that is wheelchair accessible. They can be booked via our front office team or alternatively can be contacted via 02174 689999.

All Bradford buses are equipped with accessible access for all travellers. The only restrictions are for travellers using a very large electric wheelchair or large contact their advice line for



with accessible access for all are for travellers using a very mobility scooter. It is advised to further guidelines.

There are bus stops just a 2-minute walk from the Hotel and our reception staff is available 24 hours to advise on the correct buses to get you to your destination.

Car Parking and Arrival

NCP Southgate is the car park we are affiliated with, and we offer our guests a 20% reduction when the car park ticket has been brought to the desk.

The surface from the car park to the hotel is even tarmac / paving slabs.

The car park is well lit and directly adjacent to the hotel there is street lighting.

When entering the building there are automatic sliding doors. There are no steps to the main entrance.

Upon arrival, we can give directions to the car park etc.

If a guest is not able to take their own luggage to the bedroom - we will take it for them.

The opening width of our automatic doors is 1.6m.

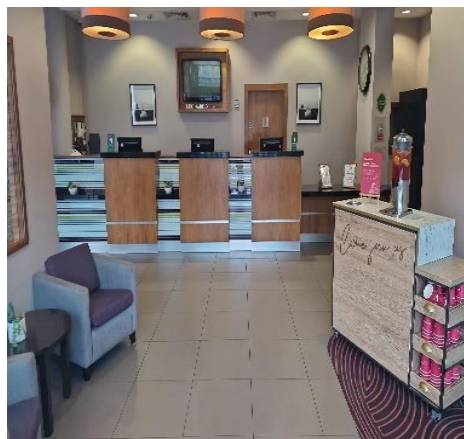
Main Entrance / Reception / Welcome Area

ACCESS STATEMENT 2025

The
is located



reception



immediately inside the front doors on the ground floor with no steps. There are 2 lift's available to all floors from the reception. The room key is used to gain access to the lift lobby floor for additional security. The ground floor is level throughout. Pushchairs and wheelchairs can be manoeuvred easily around reception, lobby and bar area, and there are chairs and sofas available in reception.

The flooring in the lobby, ground floor and bar is ceramic tile, in the restaurant is carpet with a small section of tile around the buffet area.

All areas in reception and the lobby are well lit with LED lights in the ceilings.

Staff can check you in at the main reception desk.

We frequently accommodate show rounds of the property - we advise to pre-book with our Hotel Manager.

Bedrooms

We do not have ground floor bedrooms, but every floor is accessible by lift.



ACCESS STATEMENT 2025

On every floor there is a fully accessible bedroom. All of the beds are double and have low bedside units and coffee stations. There is a lower peephole for secure access as well as an iron and board. Windows do open with a slight restriction. There is air-conditioning in every room

Bedroom doors are marked with the door number on the front - these are not raised in Braille format.

The furniture is fitted (desk, cupboards, wardrobe) but the chair and table can be removed if requested.

The beds in our accessible rooms are doubles. Relatives or carers can stay next door with an interconnecting room available.

The bedroom is lit with LED ceiling lights, 2 bedside lights. Additional lighting can be requested but is not guaranteed.

The walls and doors are of a cream colour, and the carpets are different shades of red. There are carpets in the bedroom throughout.

All our bedding and pillows are non-feather.

All of our accessible bedrooms have telephones. The phones have a flashing light indicator enabling the call to be seen and heard. We also have pull cords and flashing lights when the fire alarm sounds. We do not have hoists available.

Instructions on how to activate subtitles on the TV can be obtained from reception.

Bathrooms, Shower-rooms and Toilets

ACCESS STATEMENT 2025

A fully accessible
in the bathroom
room shower,
attached to the



room has no bath
but there is a wet
with a seat
wall.

All bathrooms are equipped with grab rails and there is flat access from the bedrooms to the en-suite.

The height of the WC from floor to seat is 19" (48cm) and the transfer side when looking at the WC is to the left.

The height of the washbasin 29" (73cm) and there is clear space under the basin.

Support/grab rails are located next to the toilet and shower seat.

The shower dials are on a turn mechanism only.

The bathrooms are well lit with ceiling with a strip light above the mirror, which is fully encased. The towels are white.

There is red emergency pull cords located in the bedroom and bathroom.

Public Areas - Halls, Stairs, Landings, Corridors

ACCESS STATEMENT 2025

The corridors are well lit with wall lights and spotlights in the ceiling; the corridor width is 55" wide.

The
on all
is
We have
from



flooring
corridors
carpeted
two lifts
reception

to all floors - these all come with audible announcements.

Top floor
buttons
max



lift
are 54.5"
height

and the lift call button is 44.5"

We may not be aware of your requirements so please request that a Personal Emergency Evacuation Plan (PEEP's) is carried out by the Duty Manager on arrival. If you have specific requirements with regards to evacuating during an emergency evacuation, please make this known to reception when we complete the PEEPs form on arrival. Should the fire alarm sound during your stay you will need to evacuate the building by using the nearest emergency exit stairwell nearest to your bedroom. The meeting point is at the back of the hotel between NCP and TK Max building. We have 1 evac chair in the building.

ACCESS STATEMENT 2025

Public Areas - Lounges, Lobbies

Our lobby/lounge area is located immediately inside the front door with level entry. These are accessed through the main doors which have a clear opening width of 2.1m.

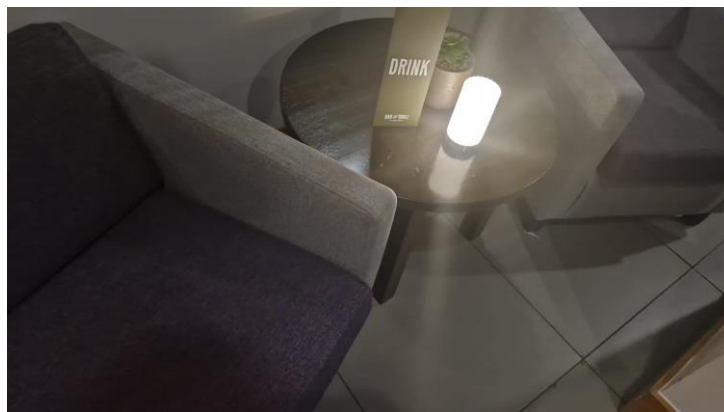
These areas are level throughout with access space between furniture, with a combination of high and low tables, couch and bucket chairs.

These areas are all well-lit with ceiling lights, wall lights and we also have floor lamps.

The flooring is a mixture of tile and carpet.

There are TVs in the bar area.

The nearest WC's and accessible WC is located near reception opposite the entrance to the lift.



Restaurant & Bar area

The bar and restaurant are located on the ground floor.

The clear width to each area is 5 feet and more from the bar to the restaurant.

There is space for wheelchairs and pushchairs and furniture can be moved if necessary.

ACCESS STATEMENT 2025

The lights in the bar and restaurant are dimmed in the evenings but remain on during the day, tiled with 2 small, carpeted areas in the bar. Carpeted with a small area of tile in the restaurant.

We try to accommodate any dietary requests and ask that we be informed in advance. Our menu's contain calorific information and indicate if Gluten Free. Non-dairy milk is available as standard.

We will happily provide room service where necessary.

Both bar and restaurant food will be brought to you when ready, breakfast is a self-service buffet. Assistance is available if necessary.

Staff can read out the menu if required.

Tables do not have cloths on them.



Public Toilets

There is clear space for a wheelchair (when facing the WC)

The height of the WC from floor to seat is 19" (48cm).

ACCESS STATEMENT 2025

There is a grab rail (when facing the WC) to the left of the toilet.

If guests need assistance, there is a red emergency pull cord in the toilet which is linked to our reception desk.

Our taps in our accessible public toilets are marked with tactile mark to distinguish hot and cold.

Conference Room



and Meeting

We have 3 meeting room on 1st floor level.

The clear door opening width to the meeting rooms is 91cm.

There is level access throughout. Either floor is suitable for a wheelchair or a pushchair.

All areas are well lit with spotlights and wall lights.

Furniture can be moved in the meeting rooms and the lobby areas upon request.

The contact for conference/meeting hire is:

Email: bradford_conference@leonardohotels.com

ACCESS STATEMENT 2025



There are WC's and accessible WC's located directly outside of the meeting rooms, on the right.

Gym and Leisure

Our gym and leisure facilities are located on the 1st floor which is accessible through lifts. A key card is needed to gain access just ask at the desk for this to be created.

It is carpeted flooring throughout the gym.

Our fitness centre is open from 07:00-22:00 .Towels and cold water are available at no charge and located inside the gym.

ACCESS STATEMENT 2025



ACCESS STATEMENT 2025

Assistance Dogs

We welcome trained assistance dogs at all of our Leonardo Hotels across the UK and Ireland, in line with the Equality Act 2010 (UK) and the Disability Act 2005 (Ireland). Guests with assistance dogs are welcome to stay in all of our hotels and visit all public areas, including meeting and events, restaurants, and bars. Our team is trained to support guests with assistance dogs, ensuring a comfortable and accessible stay. If you have specific needs or require any adjustments during your stay, please contact the hotel in advance so we can make the necessary arrangements.

Additional Information

LED lighting is used throughout the entire building.

The local hospital is:

Bradford Royal Infirmary

Duckworth Lane, Bradford, BD9 6RJ

General phone numbers

Main switchboard (for patient enquiries)	01274 542200
Emergency Department	01274 382555

There is complimentary WIFI throughout the hotel.

Just connect and enter an email address when prompted.

Address: **Leonardo Hotel Bradford**
2 Thornton Road,
Bradford,
BD1 2DH

Telephone: (01274) 848500



ACCESS STATEMENT 2025

Email: bdi_operations@leonardohotels.com

Website: <https://www.leonardohotels.co.uk/hotels/bradford>